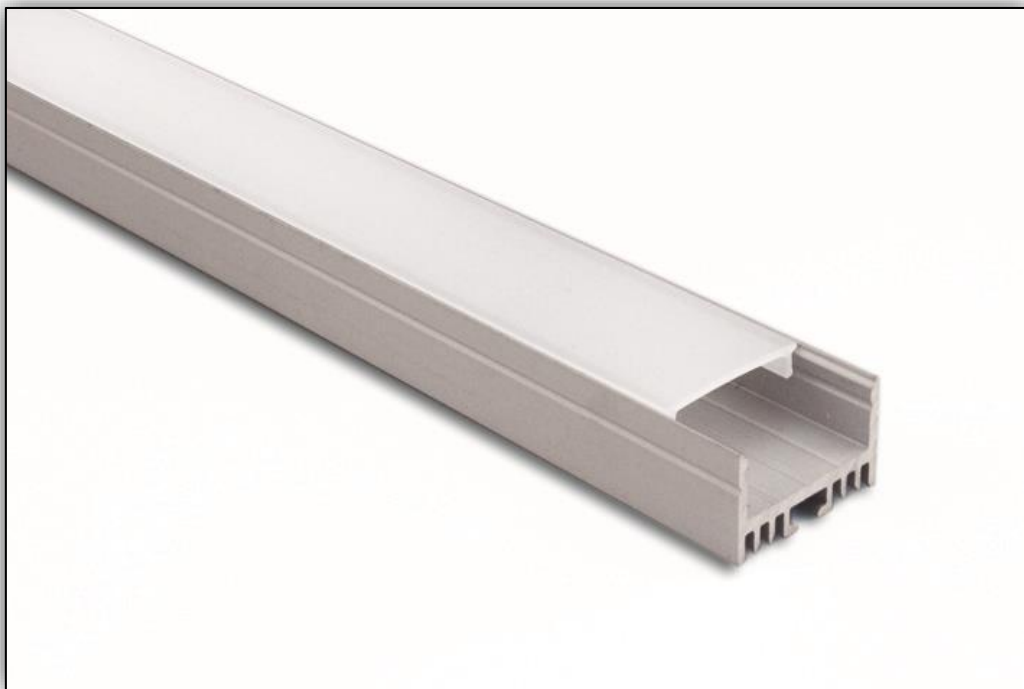


# Largo S

Architectural Profile

L026

corelli  
CORELLI



Also Available in:



Architectural profile manufactured from AL6063 type aluminium fitted with UV stabilised PMMA diffusers.

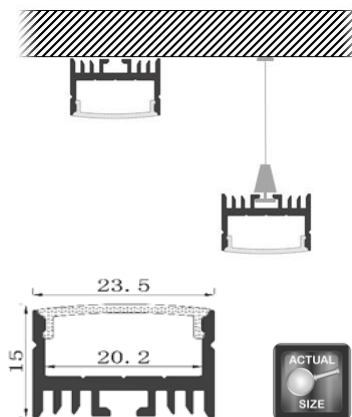
With various mounting options this profile is suited for ambient, accent and task light applications. Made with additional fin type base for increased heat dissipation.

Wide build especially suited for joinery task and up-lighting. Recommended for LED types up to 20mm wide and up to 35W/m output.

Supplied made to measure, fitted with all accessories and drivers as required. Configured to suit most dimming protocols.

## Suggested LED Types:

3528-120-10	
3528-180-15	
5050-60-15	
5050-120-24	
2835-120-10	
2835-120-24	
2835-168-34	
2835-180-18	
2835-180-36	
2110-700-20	



Some details on profiles may change without notice.

Please contact us for specification codes to match your selections.